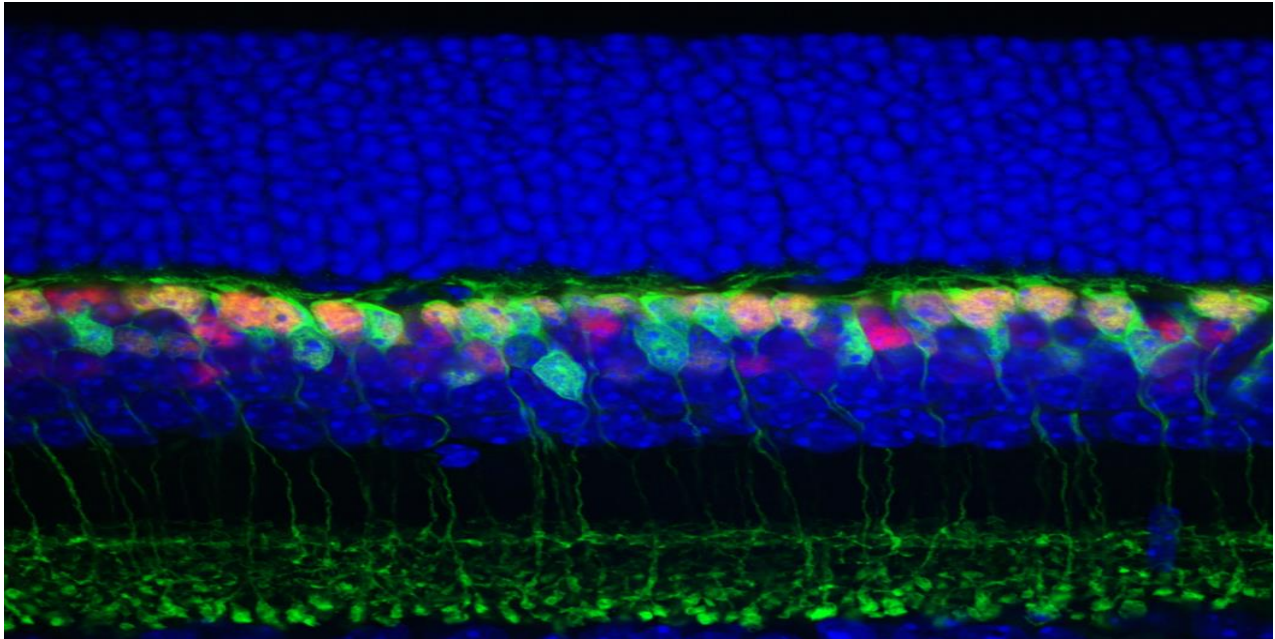




**DEPARTMENT OF DEVELOPMENTAL BIOLOGY**  
University of Pittsburgh School of Medicine

# **“Genome Topology and Coordination of Gene Expression During Retinal Development”**



**Issam Al Diri, PhD**  
**Assistant Professor**  
**Department of Ophthalmology**  
**University of Pittsburgh**

**WEDNESDAY**  
**SEPTEMBER 19, 2018**  
**RANGOS RESEARCH CONFERENCE CENTER**  
**THIRD FLOOR, ROOMS B & C**  
**2:00 PM – 3:00 PM**

**Host: Cecilia Lo, PhD \* Light Refreshments**  
**Email [jrepp@pitt.edu](mailto:jrepp@pitt.edu) for more information**